

EQ / EQH / EQB

Gas-fired residential / light commercial water heater

EQ - 115/155/280/380

EQH - 200

EQB - 115/155/200



Atmospheric water heater with thermal flue spillage protection and piezo ignition • Low noise level, suitable for installation in most locations • Ring base for easy installation and lower heat losses • Replaceable magnesium sacrificial anode • Safety thermostat • EQ 280/380 have access covers for waterside tank maintenance • EQB: maximum temperature setting of 81°C • Suitable for natural or LP gas • Optional ancillaries: Unvented kits • Destratification pump kit • Powered anode • Time clock kit • Flue fan kit • Solenoid valve kit

Technical specifications

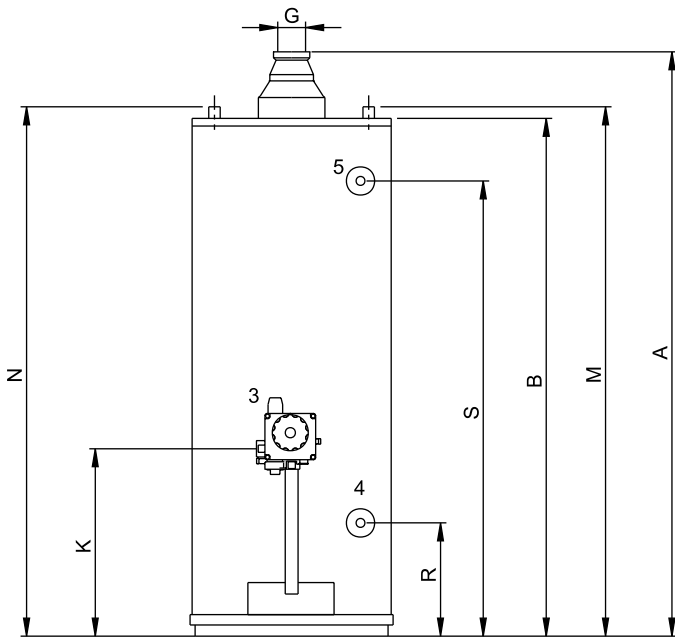
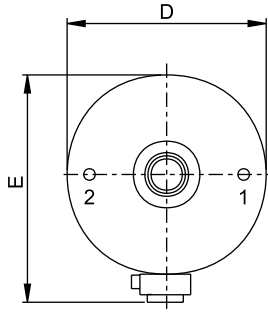
		EQ 115	EQ 155	EQH 200	EQ 280	EQ 380	EQB 115	EQB 155	EQB 200
Gas data natural gas 2H (G20)									
Input*	kW	9.3	11.3	18.3	25.1	26.7	9.3	11.3	18.3
Output	kW	7.4	9.0	14.0	19.2	20.4	7.4	9.0	14.0
Inlet pressure	mbar	20	20	20	20	20	20	20	20
Gas consumption**	m ³ /h	0.9	1.1	1.7	2.4	2.5	0.9	1.1	1.7
Gas data butane 3+ (G30)									
Input*	kW	10.1	12.2	17.6	24.5	26.0	10.1	12.2	17.6
Output	kW	8.2	9.9	13.7	19.2	20.4	8.2	9.9	13.7
Inlet pressure	mbar	30	30	30	30	30	30	30	30
Gas consumption**	kg/h	0.7	0.9	1.3	1.8	1.9	0.7	0.9	1.3
Gas data propane 3+ (G31)									
Input*	kW	9.8	11.8	17.2	22.9	24.9	9.8	11.8	17.2
Output	kW	7.9	9.6	13.4	17.9	19.5	7.9	9.6	13.4
Inlet pressure	mbar	37	37	37	37	37	37	37	37
Gas consumption**	kg/h	0.7	0.8	1.2	1.6	1.8	0.7	0.8	1.2
General									
Efficiency (gross)	%	79	79	76	77	77	79	79	76
Weight empty	kg	47	52	75	117	144	47	52	75
Maximum weight	kg	156	196	256	382	499	156	196	256
Storage capacity	l	109	144	181	265	355	109	144	181
Max. temperature setting	°C	71	71	71	71	71	80	80	81
Maximum working pressure	kPa (bar)	800 (8)							
Draw-off capacity									
T _{cold} = 10°C / T _{set} = T _{max}									
30 min. ΔT=44°C	l	171	219	299	426	524	186	239	328
60 min. ΔT=44°C	l	243	306	435	614	723	259	327	464
90 min. ΔT=44°C	l	315	394	572	802	923	331	415	601
120 min. ΔT=44°C	l	388	482	709	989	1122	403	502	738
Continuous ΔT=44°C	l/h	144	175	273	375	399	144	175	273
Heating-up time ΔT=44°C	min.	45	49	40	42	53	45	49	40
30 min. ΔT=50°C	l	150	192	263	375	461	164	211	288
60 min. ΔT=50°C	l	214	270	383	540	637	228	288	409
90 min. ΔT=50°C	l	277	347	504	705	812	291	365	529
120 min. ΔT=50°C	l	341	424	624	871	987	355	442	649
Continuous ΔT=50°C	l/h	127	154	241	330	351	127	154	241
Heating-up time ΔT=50°C	min.	51	56	45	48	61	51	56	45
30 min. ΔT=55°C	l	137	175	239	341	419	149	191	262
60 min. ΔT=55°C	l	194	245	348	491	579	207	262	371
90 min. ΔT=55°C	l	252	315	458	641	738	265	332	481
120 min. ΔT=55°C	l	310	385	567	791	898	323	402	590
Continuous ΔT=55°C	l/h	116	140	219	300	319	116	140	219
Heating-up time ΔT=55°C	min.	57	62	50	53	67	57	62	50
Shipping data									
Weight incl. packaging	kg	51	57	81	135	162	51	57	81
Width packaging	mm	530	580	570	780	780	530	580	570
Height packaging	mm	1140	1250	1580	1640	1830	1140	1250	1580
Depth packaging	mm	570	630	650	870	870	570	630	650

* Gas data on gross value

** Gas consumption at 15°C and 1013.25 mbar

Dimensions

EQ / EQB

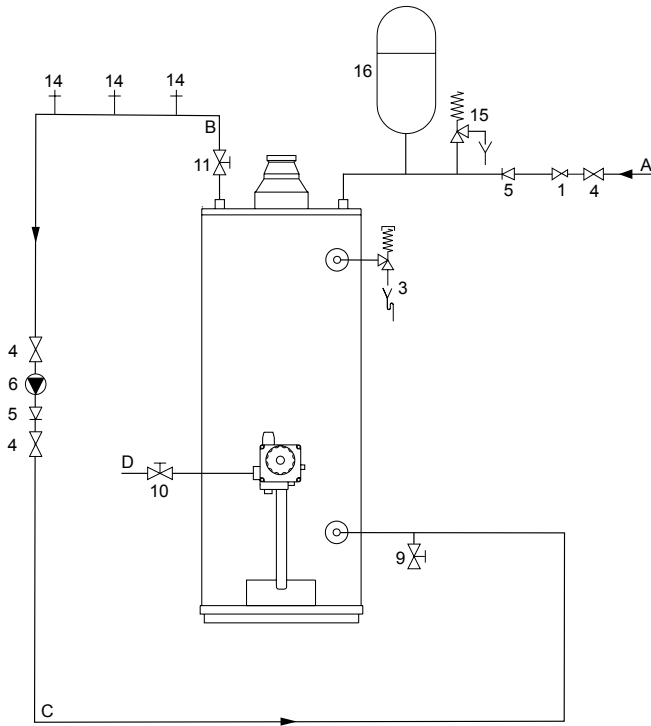


	EQ/EQB 115	EQ/EQB 155	EQH/EQB 200	EQ 280	EQ 380
A	1280	1370	1670	1585	1780
B	1120	1210	1540	1450	1640
D	465	515	515	645	675
E	545	595	605	735	765
G	80	80	100	130	130
K	325	325	380	375	375
M	1180	1270	1590	1505	1685
N	1180	1270	1590	1505	1685
R	250	250	255	285	285
S	965	1045	1380	1280	1460
1	Cold water			3/4 - 14 NPT (EQ 280: 1 - 11.5 NPT) (EQ 380: 1 1/4 - 11.5 NPT)	
2	Hot water			3/4 - 14 NPT (EQ 280: 1-11.5 NPT) (EQ 380: 1 1/4 - 11.5 NPT)	
3	Gas control			Rp 1/2	
4	Tank drain valve			3/4 - 14 NPT	
5	T&P valve			3/4 - 14 NPT	
Dimensions in mm.					



Installation diagrams

Unvented



- 1 Pressure reducing valve
- 3 T&P valve
- 4 Stop valve
- 5 Non-return valve
- 6 Circulation pump
- 9 Drain valve
- 10 Gas valve
- 11 Service valve
- 14 Hot water tap
- 15 Expansion valve
- 16 Expansion vessel
- 17 Three way valve
- 18 Water cistern
- 19 Float valve

- A Cold water
- B Hot water
- C Return circulation
- D Gas supply
- E Overflow pipe
- H Expansion vent pipe

A.O. Smith unvented system kits utilise combination valves.

An EQ / EQH / EQB water heater should be installed in accordance with local standards and ventilation requirements (category B11B5).

Further installation and connection details can be found in the Installation & Commissioning Manual.

Vented

